

PART OF BLOCK 75, PLAT C  
OAK CREST PARK ADDITION

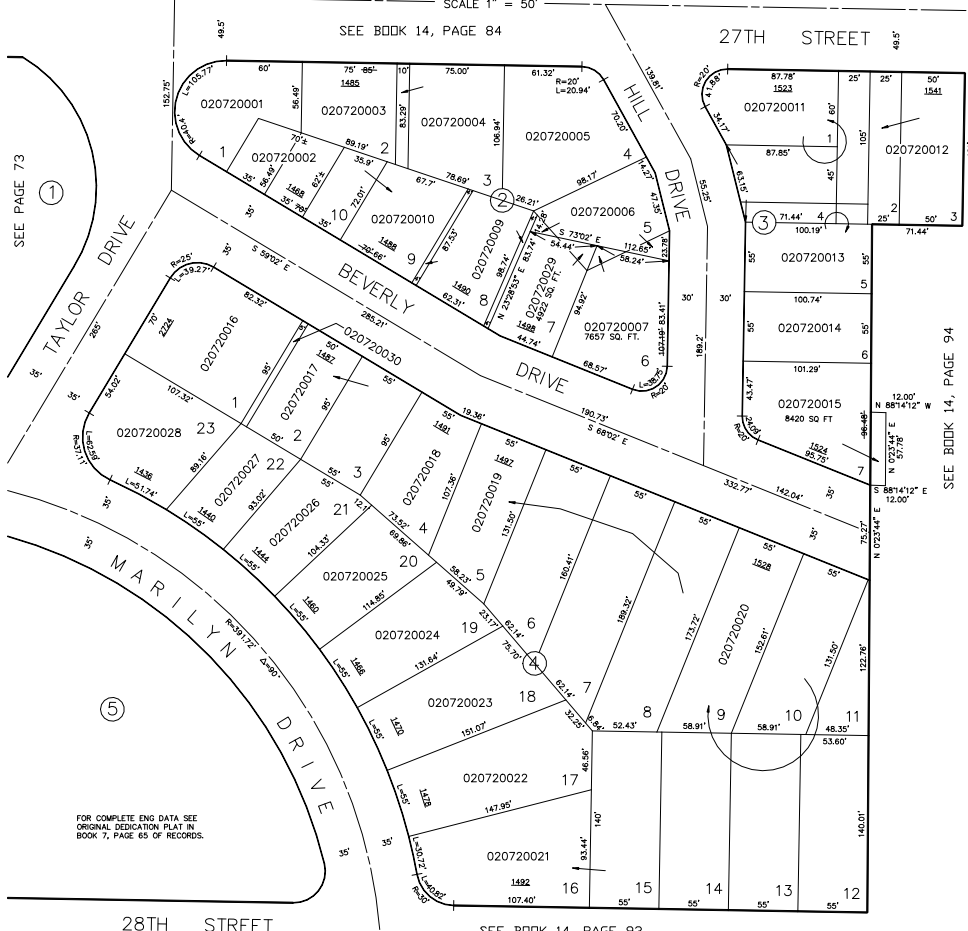
BLOCKS 2 - 4  
IN OGDEN CITY

SCALE 1" = 50'

TAXING UNIT: 25

SEE BOOK 14, PAGE 84

27TH STREET



72

SEE BOOK 14, PAGE 94

SEE BOOK 14, PAGE 93

JPS 10-95